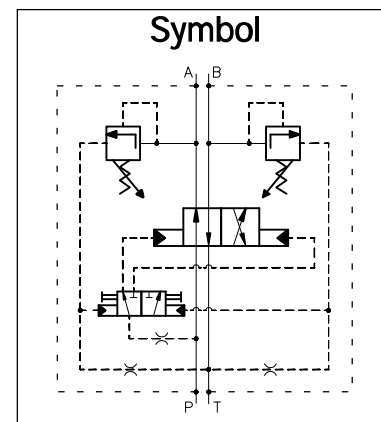
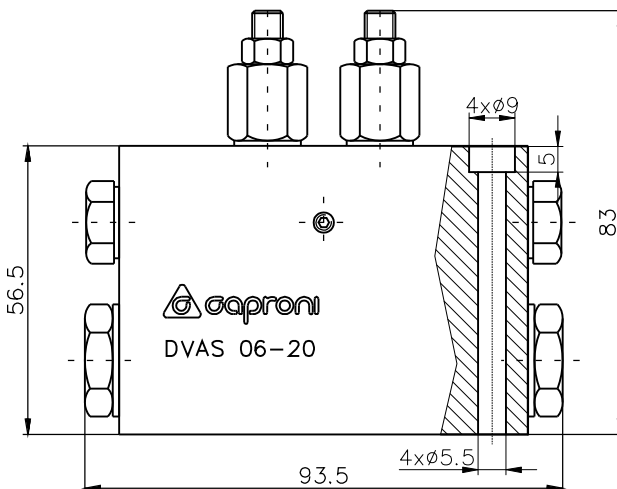
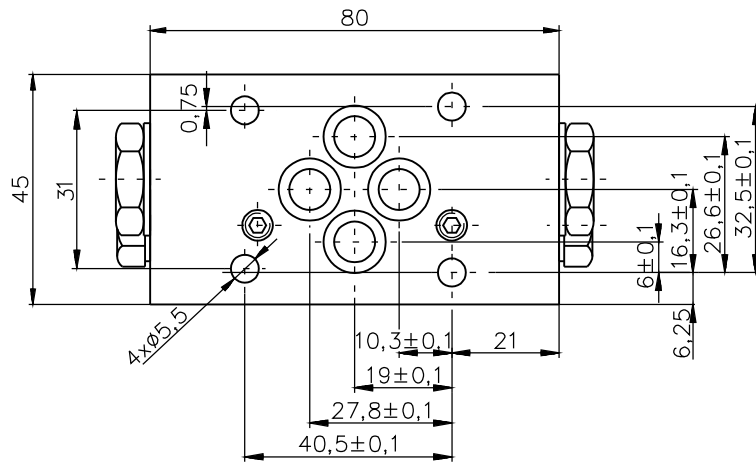
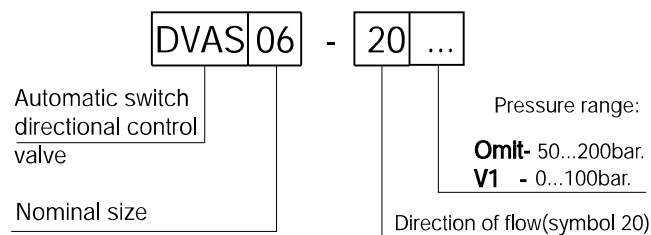


**GENERAL DESCRIPTION**

List: DVAS06-1-May 2016

Flow automatically reverses direction from P-A to P-B when the set value of pressure relief valves is reached.

- ✓ 4/2- way directional control valves with hydraulic pilot operation
- ✓ Manual override option
- ✓ Reliability and long life
- ✓ Mounting surface CETOP3 (NG6)

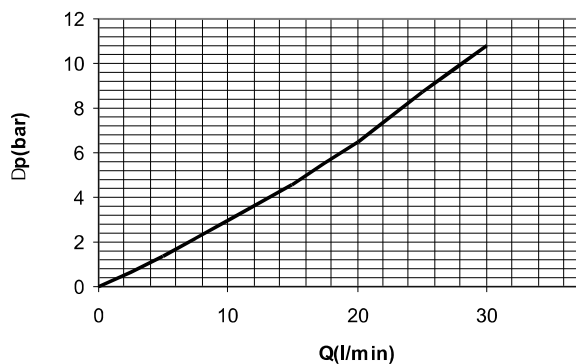

**ORDERING CODE**


**TECHNICAL DATA**
**GENERAL**

DATA	UNIT	VALUE/RANGE
Installation position		preferably horizontal
Max. ambient temperature	°C	-20...+50
Weight	kg	1,400

**HYDRAULIC**

Max. pressure	MPa	21
Maximum flow	l/min	30
Minimum flow	l/min	4
Hydraulic fluid - mineral oil: -viscosity -filtration degree -temperature	mm <sup>2</sup> /s mm °C	10...800 0.025 -20...80

**CHARACTERISTICS**
**Dp/Q**
**A(B) to T**

**P to A(B)**
